

Optimizing Hydrolysis/Acidogenesis Anaerobic Reactor with the Application of Microbial Reaction Kinetics

A. Paramsothy, R.M. Wimalaweera, B.F.A. Basnayake¹ and D.T.N. Wijesinghe

Postgraduate institute of Agriculture
University of Peradeniya
Peradeniya

ABSTRACT. *Among the various options available as treatment, a combined system of anaerobic/aerobic digestion is a promising technique for treating Municipal Solid Waste (MSW). The maximum extractions of elute in the first reactor of two-stage digesters reduce the required volume of reactors while benefiting from the production of biogas and aerobic compost. This study was undertaken to determine which of the configurations, up or downward flow of liquid in a hydrolytic phase anaerobic reactor, is best and to optimize feeding of reactor for maximum elute extractions. Two pilot scale (500-L) anaerobic digesters were used in this study. Daily feeding was done with pre-sorted raw MSW.*

The classical 'logistical growth' kinetics was used in the analysis. It was found that there exists two distinct phases of microbial growth. The phase change seems to take place when Volatile Suspended Solids (VSS) reach the peak value of α/β . However at the time of this change, the cumulative Volatile Solids (VS) had not reached the peak due to high concentrations of raw wastes, transformed substrate and microbial cellular materials in the upward flow experimentation. In the case of downward flow, again, VS were not allowed to reach the peak due to limitations on diffusion of substrate and product. The rates of transformations in analyzing VS and VSS in the upward direction were much higher than those downward. It could be further improved by feeding the reactor 7.5 days after operating the digester and subsequent feeding every 3.3 days while extracting the elute everyday.

INTRODUCTION

Growing urbanization and industrialization have led to generation of large quantities of wastes, which can be broadly classified as Municipal Solid Waste (MSW). In Sri Lanka, the daily per capita solid waste generation from households is about 0.3-0.65 kg/day and the total amount of waste generated is around 6400 tonnes/day (UNEP, 2001). Since the organic fraction makes up 65% of the total amount of MSW, it produces 4100 tonnes of biodegradable waste per day in Sri Lanka. Therefore, treatment of these wastes is an important component of an integrated solid waste management strategy to reduce both the toxicity and volume of the MSW for final disposal in landfill.

Among the various options available as pre-treatment, anaerobic digestion is a promising method of treating MSW because it has more advantages over other methods. Mainly, it gives useful products such as compost and biogas, which can be used as an

¹

Department of Agricultural Engineering, University of Peradeniya, Peradeniya.

energy source in developing countries. Also it needs comparatively less space and reduces the amount of greenhouse gas emissions when compared to combustion/incineration, aerobic composting and land-filling (Environment Canada, 1995). Further, it reduces pathogens of MSW and could obtain hygienic compost from the remaining fibrous sludge.

Anaerobic digestion proceeds through a series of parallel and sequential processes by varieties of consortia. In a well-balanced anaerobic digestion process, all products of a previous metabolic stage are converted into the next one without significant build up of intermediary products. The overall result is a nearly complete conversion of the anaerobic biodegradable organic material into end products like methane, carbon dioxide, hydrogen sulfide, and ammonia.

When considering the particulate substrate like solid waste, hydrolysis is the rate-limiting step since the accessibility of hydrolytic microorganisms to the solid matter and hydrolysis of complex polymeric components are not in optimum level (Delgenes *et al.*, 2002). The rate of hydrolysis is a function of factors such as pH, temperature, composition and particle size of the substrate (Veeken *et al.*, 2000).

MSW anaerobic research is focusing on optimizing process conditions of first phase, which is responsible for the breakdown of complex organics except lignified materials. Reducing the raw MSW to the lignified materials is one object of the Sustainable Solid Waste Landfill Management Project so that elutes formed in the 1st phase of hydrolysis is separated from the composting of lignified materials. Thus the present systems of composting could continue with the added advantage of energy generation. However, the present two stage anaerobic systems are very expensive and require better process conditions to handle large quantities of wastes, particularly to address the controversial issue of dry and wet or solid and slurry phase digestion.

Kinetic analysis is more helpful to understand the conditions in the reactors and it can be used to modify and optimize the microbial dynamics of the reactors. This paper is an attempt to compare two pilot scale experimentations (up flow and down flow reactor) of the hydrolytic phase digesters and to optimize feeding of reactor. This will determine the design criteria for landfill bioreactors and optimization of enzymatic reactions for rapid degradation of MSW.

METHODOLOGY

Reactor design

The Experiments were carried out at Meewathura University Farm, Faculty of Agriculture, University of Peradeniya.

Two reactor systems were used with downward (P1) and upward (P2) leachate circulation system and the system mainly consists of a hydrolytic reactor (500-L) and two leachate tanks (200-L each), See annex I, II. The MSW was introduced to the middle compartment from the top feeding hopper and the elute fraction was filtered out from the system to be sent for the 2nd phase digestion. The remaining fibrous sludge was removed periodically from the bottom valve of the reactor.

Elute of this slurry phase was circulated periodically in downward direction for P1 and upward direction for P2 with the use of a one hp centrifugal pump. Filtering plates inside the reactor facilitate the process of filtering out elutes from large or fibrous particles in both reactors.

Feeding the reactor

The MSW collected from Local Authorities were used for the study. MSW were hand-sorted to obtain biodegradable fraction, then mixed, shredded and chopped to particles <2.5 cm before feeding the reactor. To understand the composition of MSW, random samples were analyzed. The quantity of water to be added was based on the average moisture content (10-15% DM) of the raw waste so that adequate water content is maintained in the influent to facilitate elute circulation and extraction. The feedings were done everyday for a period of more than 15 days.

Samples for the analysis

Samples were taken from the extracted elute and analyzed for the Volatile Solid (VS) and Volatile Suspended Solid (VSS). All experimental analyses were carried out with standard methods (AOAC, 1992). The sample analysis was done on daily basis.

Analysis

It has been assumed that all of the parameters that depend on microbial growth follow the logistical growth curve;

$$X_t = \frac{aX}{bX_o e^{at} + a - \beta X_o} \quad (1)$$

$$X = X_o e^{at}$$

X_t = Biological transformation mass of microbes at time t.

X_o = Initial value of reactive of microbes.

a = Transformation or growth coefficient.

b = Retardation coefficient.

X = Biological transformation mass of microbes

The first derivative

$$\frac{dX_t}{dt} = aX_t - \beta X_t^2 \quad (2)$$

An non-linear computer program based on Math Lab has been developed to obtain the

above coefficients and X_o . The program parameters are $a = a$, $m = \frac{a}{b} X_o$,

$c = X_o$

The regression analysis was conducted to obtain R^2 . The program optimises the value of a , m and c to give the optimum R^2 value.

When the first derivative $\frac{dX_t}{dt}$ equated to transformation rate, Tr and differentiated with

$$\text{respect to } X_t; \quad \frac{dTr}{dX_t} = a - 2bX_t \quad (3)$$

and at the maximum value of the transformation rate, the slope is equal to zero. Therefore, the maximum concentrate or utilization of biomass is;

$$X_t = \frac{a}{2b} \quad (4)$$

Substituting $\frac{a}{2b}$ in equation (1), the time for maximum substrate utilization rate could be found.

$$\begin{aligned} \frac{a}{2b} &= \frac{aX_0e^{at}}{bX_0e^{at} + a - bX_0} \\ \therefore abX_0e^{at} &= a^2 - abX_0 \\ e^{at} &= \frac{a^2 - abX_0}{abX_0} \\ t &= \frac{1}{a} \ln \left(\frac{a}{bX_0} - 1 \right) \end{aligned} \quad (5)$$

RESULTS AND DISCUSSION

Composition study

Table 1. shows the composition of raw MSW and digester feed which were used for the study. MSW used for the study was found to be rich in organic materials such as food and vegetable refuse, yard wastes, and papers, which are mostly biodegradable (71%). The moisture content of samples was 62% and had an average biodegradable perishable content of about 65%. After manual sorting of MSW the biodegradable portion of digester feed has increased to 90% and other parts such as plastic and polythene, metal, glass and soil were reduced. Therefore, the sorted waste is highly suitable for biological treatments like composting and anaerobic digestion (Madugethika *et al.*, 2002). The composition of the MSW assumed to be consistent throughout the experiment periods since collection route and sources were the same.

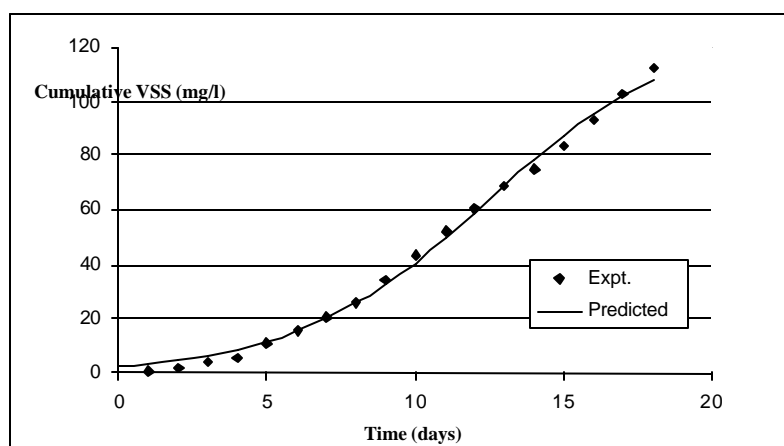
Table 1. Characteristics of raw MSW and digester feed materials.

Waste component	Raw MSW% (w/w)	Digester Feed %(w/w)
Perishables*	65.0	90.0
Cardboard/paper	6.0	5.0
Plastic/polythene	15.0	1.0
Metal	1.0	0.0
Glass	0.5	0.0
Soil/sand	0.65	2.0
Other	11.85	2.0
Total	100.00	100.00
Moisture (%)	62.31	78.60

* Food refuse and vegetable

Single and two-phase reactions

The enzyme activity depends on the physical and biochemical changes. VS and VSS in elute are indicative parameters, which can be used to express microbial growth dynamics in bioreactors. The VS loss of the organic substrate is accumulated in elute and is proportional to microbial activity and, therefore, the microbial growth X_t can be expressed as a proportional percentage of VS or VSS accumulation in the elute.

**Fig. 1 Experimental and predicted microbial dynamics based on variation of VSS-elute from P1.**

The results of increase in VSS of elutes with time follow the classical logistic growth curve shown in figure 1 and the same pattern was observed for most of the

reactors. A sigmoid growth curve (predicted) also referred to as 'logistic law' can be fitted to the experimental data.

There are slight deviations from the logistic curve in some experiments. These deviations are prominent at the beginning and in the latter part of the curve. However as mentioned by several authors (Loehr, 1984; Hutchinson, 1978; Rehm and Reed, *et al.* 1981) closer examination of the results indicates that there are two microbial growth curves. Although hydrolysis has been described by first order kinetics, (Vavlin *et al.* 1996) compared two-phase, Contois, Monod and first order and found that two phase and Contois were equivalent and best simulated the data. But Contois kinetics has a single parameter representing substrate and biomass saturation levels. Separate analysis for two curves gives more accurate predictions for smaller number of data points, where R^2 of single phase cannot be compared with two-phase reaction. Figure 2 and 3 show the fitted curves for P1 and P2 reactors and table 2 gives the logistic growth curve coefficients. Growth curve coefficients explain the microbial reactions and hence different reactor configurations could be compared.

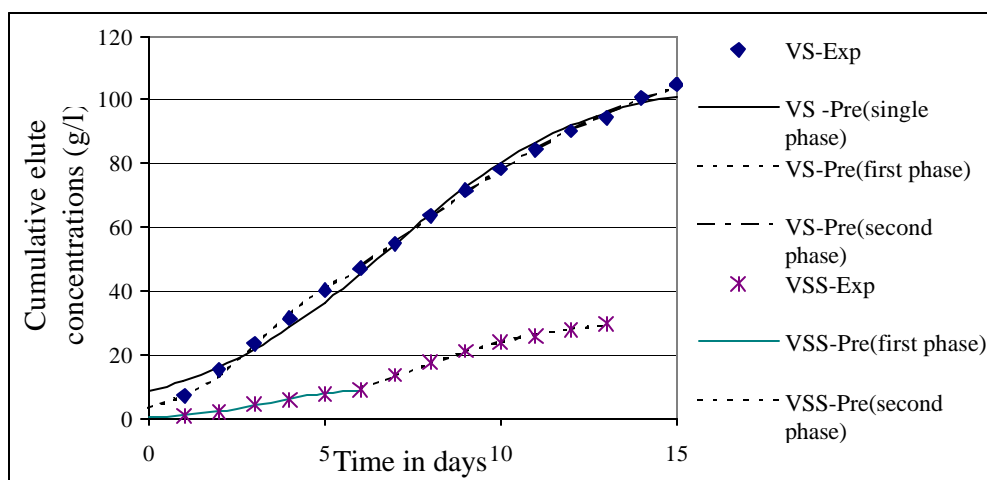


Fig. 2 Logistical growth curves of single and two phases fitted for Volatile Solids (VS) and two phases for Volatile Suspended Solids (VSS) of elutes from up flow reactor P2.

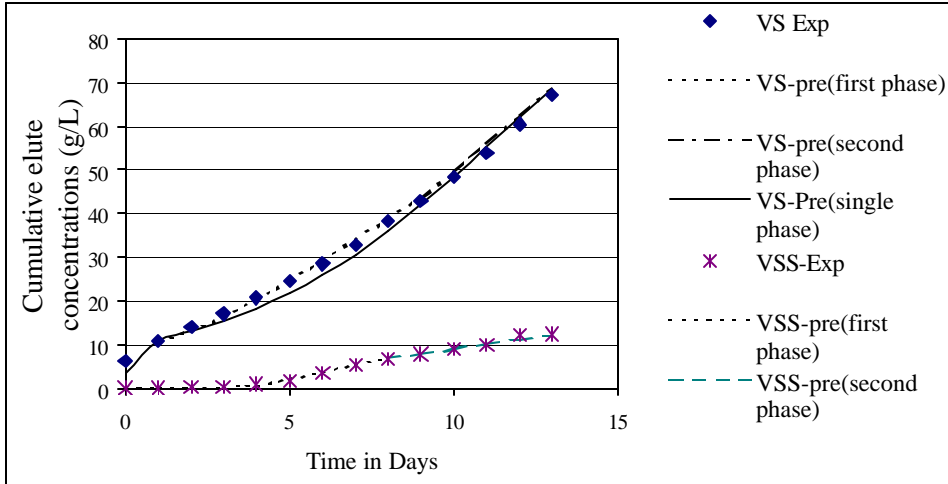


Fig. 3 Logistical growth curves of single and two phases fitted for Volatile Solids (VS) and two phases for Volatile Suspended Solids (VSS) of elutes from down flow reactor P1.

Table 2. Logistical growth parameters for reactors P1 and P2 Down flow reactor (P1).

Parameter	VS			VSS		
	Phase-1	Phase-2	Single	Phase-1	Phase-2	Single
μ	0.3472	0.2509	0.2481	1.0300	0.2500	0.6543
λ	0.0060	0.0024	0.0022	0.1397	0.0138	0.0436
X_o	5.4000	6.3000	6.0000	0.0050	1.2000	0.0400
a/β	57.0000	104.000	110.000	7.4000	18.0000	15.0000
R^2	0.9980	0.9915	0	0.9952	0.9692	0.9826
$X_t \text{ at Max}$	28.9333	52.2708	0.9972	3.6864	9.0579	7.5034
$\frac{dX_t}{dt}$	5.0228	6.5573	56.3863	1.8985	1.1322	2.4547
T_m	6.5	18.9	6.9947	7.1	18.6	9.1
			11.6			

T_m – time for getting maximum value of the transformation rate Up flow reactor (P2)

Table 3. Logistical growth parameters for up

	VS			VSS		
	Phase-1	Phase-2	Single	Phase-1	Phase-2	Single
a	0.7887	0.2604	0.3533	0.9129	0.5094	0.4471
β	0.0152	0.0022	0.0033	0.0953	0.0164	0.0139
X ₀	3.5388	47.7725	8.6782	0.4477	9.6740	3.5388
a/ β	51.894	118.848	106.850	9.5778	31.0584	51.8947
R ²	7	4	3	0.9935	0.9952	0.9963
	0.9889	0.9988	0.9947	4.7896	15.5304	16.0827
$\frac{dX_t}{dt}$	25.9440	59.1818	53.5303	2.1862	3.9556	3.5952
	10.2310	7.7054	9.4561	3.3	7.6	4.7
	3.3	7.5	6.9			
T _m						

Comparison of reactor configurations - up and downward flow of elute

In the upward flow (P2), a value for VS, which is the growth coefficient, is greater than downward (P1) but the β value, which is the retarding coefficient, is the opposite, thus, the peak value of a/ β in the downward (P1) being higher than P2. However, the phase changes take place before reaching the peak value, particularly in the P1 reactor. These phase changes seem to occur when VSS reach the peak values and the peak value in the case of P2 is higher than that in P1, although a value of P1 is slightly elevated than that of P2, while β of P2 < P1. VSS is a close measure of microbial population densities (Loehr, 1984) and substrate excess or limitations as well as saturation of products could be related to VS concentrations. According to Garcia-Heras, (2003) hydrolysis is the first step of converting complex waste into soluble products by enzymatic activities. The microorganisms secrete intracellular enzymes as catalysts for hydrolysis and it undergoes a lysis process in which the cell membranes are broken down to release the organic matter to the bulk substrate.

The retardation β of VS could be attributed to excess of soluble substrate causing organisms to stop producing enzymes (Ramsay, 1997) and enzymes normally produced at a rate proportional to the production (addition) of biomass (Humphrey, 1979; Jain, *et al.*, 1992) and before substrate diffusion rate becomes rate limiting, the concentration of the product will probably inhibit enzymatic degradation (Gonzalez et al., 1989). The X₀ of microbial concentrations in VS and VSS in the upward flow (P2) are much higher in the phase two reactions than P1, signifying the effect of transformations to cellular materials, being the saturation of product. It could then be deduced that the retardation coefficient β would increase if there were excess of both substrate and product. Thus feeding of reactor should be reduced to increase hydrolytic reaction rate in the 1st phase.

Effect of surface area

The solubility and suspended materials from the wastes are more in an upward direction of flow, particularly in a slurry phase concentrations and it is much more efficient than downward since it has been shown that the surface area has a strong effect

on the rate of enzymatic hydrolysis of cellulose (Walker and Wilson, 1991), lipids (Martinelle and Hult, 1994) and proteins (Ramsay, 1997). Mechanical size reduction further facilitates this process by providing homogenized substrate and increases the surface area of substrate for enzymatic reactions (Chang, 1993). Also shredding reduces the volume and makes it easy to handle. Buivid *et al.*, (1981) has observed that the particle size reduction inhibit the methanogenesis and enhances the acid generation. According to Veeken *et al.* (2000), the optimal hydrolysis method depends on reactor configuration, liquid velocities, solid concentrations and retention time. It could be deduced that the ratio of solid/water in the slurry phase would be optimum with increased specific surfaces of active sites for adsorption reactions and diffusion of hydrolytic products.

In the up flow reactor (P2) the substrate is mixed frequently due to upward pumping and the microbes secrete enzymes to the bulk liquid where it absorb in to a particle or reacts with a soluble substrate (Jain, *et al.*,1992) and diffusion is not limiting. But in the case of P1, the surface area exposed is reduced and diffusion becomes the constraining factor, lowering both α and β . Because as reported by Vavilin *et al.* (1996), the attached organism secretes enzymes into the vicinity of the particle and benefited from the soluble substrates being released.

Optimization of feeding

Logistic growth curve coefficients (table: 2) give better understanding of the reactions and it is clearly illustrated in rate of change in VS in figure 3. The transformation rate of VS (dVS/dt) can be plotted with respect to time as shown in figure 3 and the transformation rates give similar trends for both reactors. Maximum transformation rate occurs after 3.3 days and approximately 7.5 to 7.6 days for both VS and VSS for 1st and 2nd phases of reactions and X_t at maximum corresponds the same trend for both VS and VSS, see table 2. However, the values for the maximum transformation rate (dVS/dt) for VS and VSS are higher for upward than downward flow, which explains why the time taken for maximum transformation rate for both 1st and 2nd phases is much longer in P1 than that in P2.

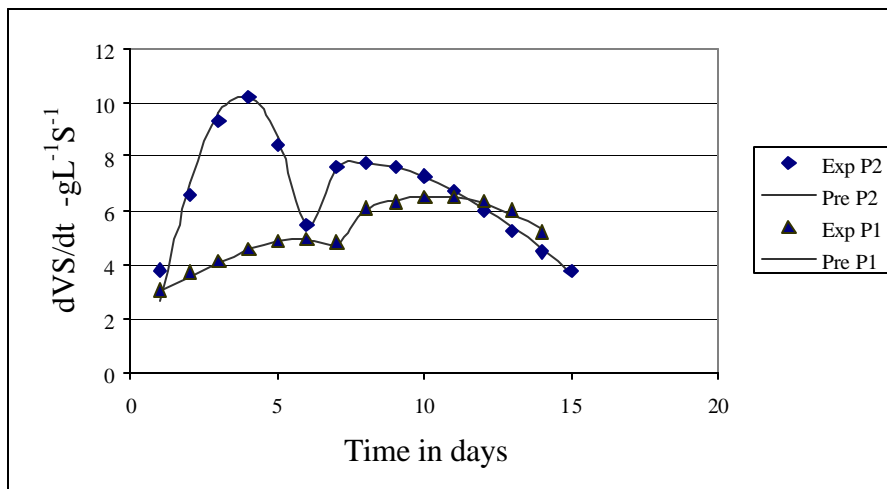


Fig.4 Experimental and predicted rates of change of VS (dVS/dt) with time for the 1st and 2nd phases of hydrolytic and acidogenesis in P1 and P2.

In order to further increase the rate of transformation, the available nitrogen should be released to stabilize the reactor. The release of nitrogen commences at the end of the carbonaceous demand (Loehr, 1984) and the first feeding after loading the reactor could be at the maximum transformation rate of the 2nd phase and then subsequent feeding every 3.3 days while elute is removed everyday.

Acidogenesis/fermentation reactions

It is very likely that the 2nd phase that has been identified could be acidogenesis where organic acids and alcohols are formed (Jain et al. 1992). The peak value in the 2nd Phase is almost same since upward (P2) flow is slightly higher. However, the time taken is much less and all other kinetic parameters are higher for VS and VSS in upward than downward flow (see table 2).

CONCLUSIONS

The composition of MSW used in the experiments as feed was suitable and consistent for anaerobic digestion. The increases in VS and VSS follow the classical logistic growth curves for the two configurations of up and downward flow in the hydrolytic phase digester. Although the growth curves show a single-phase digestion, two distinct phases could be identified. The phase change transpires when VSS reaches the peak in the 1st phase reactions.

The growth coefficient α , and the retarding coefficient β of the upward flow experimentation is higher than in downward flow experiments, resulting in a lower peak value of α/β . The phase change of VSS takes place before VS reaches the peak value since excess concentrations of substrate, organic materials and microbial cellular materials retard the transformations in the upward flow experimentation. Mass transfer through diffusion is the limiting factor in the downward direction of flow. Although upward flow is better than downward in breaking down the solids, it could be more effective if the feeding of reactor is performed once the reactor has been stabilized at the maximum transformation rate of the 2nd Phase and subsequent feeding every 3rd day while elutes are extracted everyday.

ACKNOWLEDGEMENTS

The Authors are most grateful to the Swedish International Development Agency (SIDA) and Asian Instituted of Technology (AIT) for technical and financial supports given for the project; Sustainable Solid Waste Management in Asia. The Authors greatly appreciate all resource personnels of AIT –Sida project and personnel in the three Local Authorities, Udunuwera, Yatinuwara and Gagawata Korale Pradeshiya Sabas.

REFERENCES

Allen Don. G., Chui C. and Perry B.(1983). Element of Calculus.

The Journal of the AOAC, (1992). Arlington, 1060-3271.

- Buivid M.G., Wise D.L., Blanchet M.J., Remedios E.C., Jenkins B.M., Boyd W.F., Pacey J.G., (1981). Fuel gas enhancement by controlled landfilling of municipal solid waste, *Resources and Conservation*, 6: 3-20.
- Chang L., (1993). Investigation on landfilling of MSW pretreated with different processes, *Proceedings Sardinia 1993*, Fourth International Landfill Symposium Cagliari, Italy, 2:2049-2056.
- Delgenes, J.P., Penaud, V. and Moletta, R., (2002). Pretreatments for the Enhancement of Anaerobic Digestion of Solid Wastes, Water Intelligence Online ©IWA, INRA - Laboratoire de Biotechnologie de l'Environnement, Avenue des Etangs, 11100 Narbonne, France.
- Gonzalez, G., Caminal, G., de Mas, C., and Lopez-Santin, J. (1989). A kinetic model for pre-treated wheat straw saccharification by cellulase. *J. Chem. Tech. Biotech.* 44: 275-288
- Humphrey, A. E. (1979). The hydrolysis of cellulosic materials to useful products. in *Hydrolysis of Cellulose: Mechanisms of Enzymatic and Acid Catalysis*. R. D. Brown, Jurasek, L. American Chemical Society, Washington: 25-53.
- Hutchinson G.E. (1978). *An introduction to population ecology*, Yale University Press, New Haven.
- Jain, S., Lala, A.K., Bhatia, S.K., and Kudchadker, A.P. (1992). Modelling of hydrolysis controlled anaerobic digestion. *J. Chem. Tech. Biotech.* 53: 337-344.
- Loehr R.C., (1984). *Agricultural Waste Management. Pollution control for Agricultural*, New York; Academic press ,Inc.2nd edition.
- Madugethika,J, Basnayake,B.F.A, Nirosha,K. (2002). Development of an integrated solid waste management system for three local authorities in Sri Lanka through capacity Mobilization. 14th Annual Congress PGIA, University of Peradeniya.
- Martinelle, M., Hult, K. (1994). Kinetics of triglyceride lipases. in *Lipases*. P. Woolley, Petersen, S. Cambridge University Press, Cambridge.
- Ramsay, I. R. (1997). *Modelling and Control of High-Rate Anaerobic Wastewater Treatment Systems*.Department of Chemical Engineering. University of Queensland, Brisbane: 270.
- Rehm H.J. and Reed G., (1981). 7 batch and continuous culture of microbial ,plant and animal cells. Book on biotechnology published by Verlog Chemie G.M.B.H.11.
- United Nations Environmental Program (UNEP), (2001). *State of the environment*, Sri Lanka. 2001,ISBN: 92-807-2016-2023.

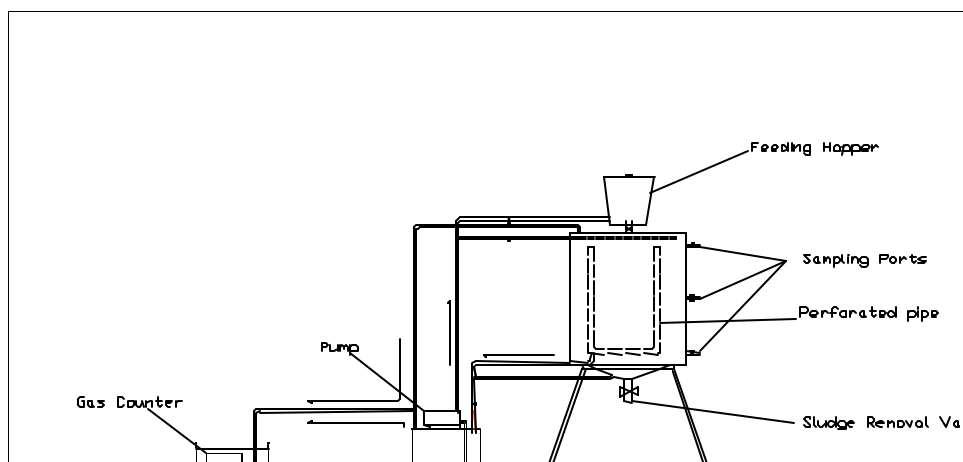
Vavilin, V. A., Rytov, S.V. and Lokshina, L. Ya. (1996a). "A description of hydrolysis kinetics in anaerobic degradation of particulate organic matter." *Bioresource Technology* 56: 229-237.

Veeken, A.H.M., Hamelers, B.V.M., (2000). Effect of substrate-seed mixing and leachate recirculation on solid-state digestion of biowaste. *Water.Sci. Technol.*41(3):255-262.

Walker, L.P., Wilson., D.B., (1991). "Enzymatic hydrolysis of cellulose: An overview." *Bioresource Technology*.36(1): 3-14.

ANNEX -1

Down flow reactor



Up flow reactor

Up flow reactor

ANNEX II

